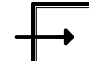

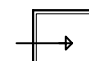
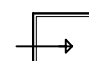
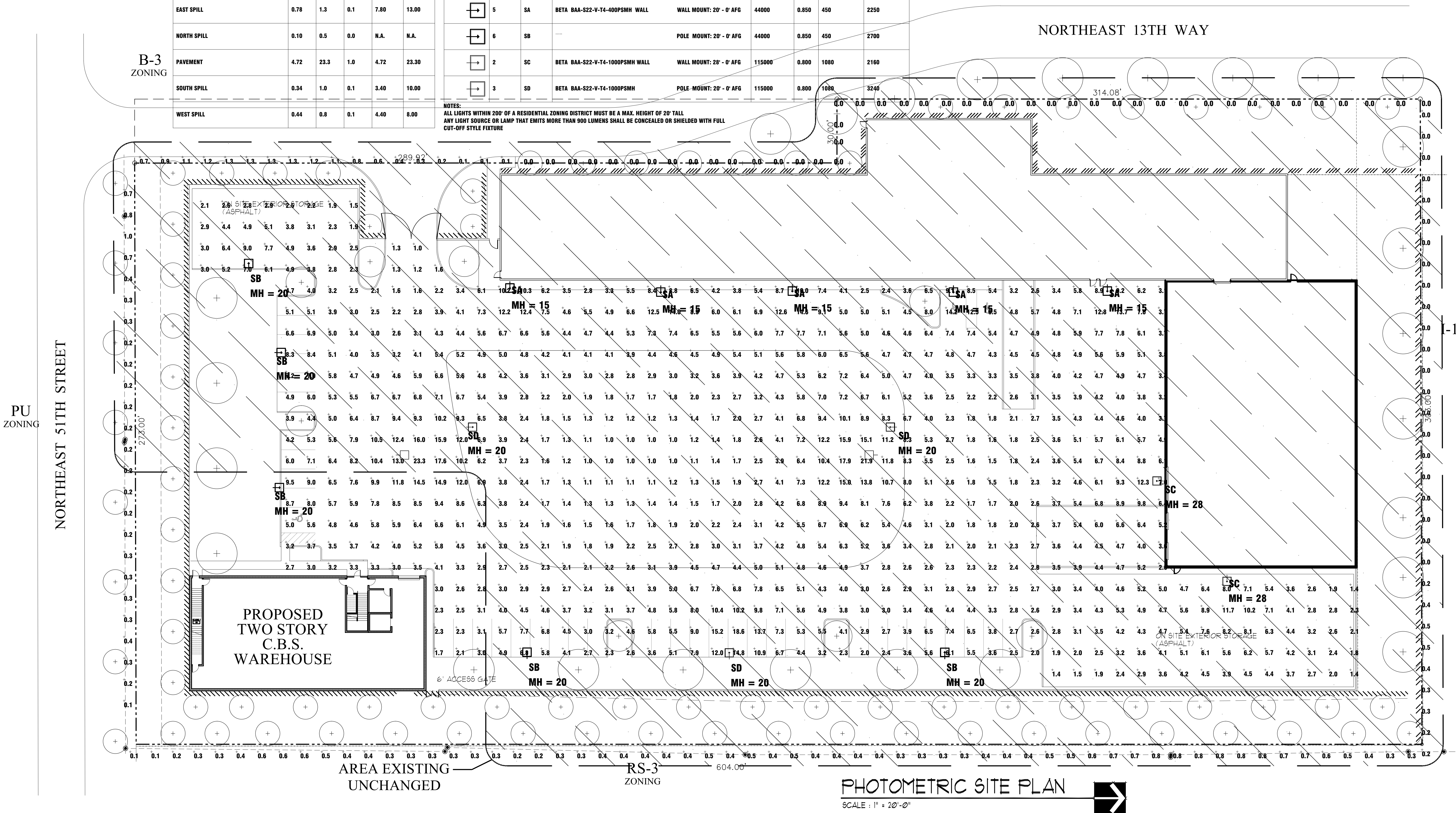


| Calculation Summary (FOR REFERENCE ONLY - EXISTING UNCHANGED)          |      |      |     |         |         |
|--|------|------|-----|---------|---------|
| Project: RIVA MOTOR SPORTS  POMPANO BEACH, FL  SITE  REV 1  12-16-2012 |      |      |     |         |         |
| Label  | Avg  | Max  | Min | Avg/Min | Max/Min |
| EAST SPILL   | 0.78 | 1.3  | 0.1 | 7.80    | 13.00   |
| NORTH SPILL  | 0.10 | 0.5  | 0.0 | N.A.    | N.A.    |
| PAVEMENT   | 4.72 | 23.3 | 1.0 | 4.72    | 23.30   |
| SOUTH SPILL  | 0.34 | 1.0  | 0.1 | 3.40    | 10.00   |
| WEST SPILL   | 0.44 | 0.8  | 0.1 | 4.40    | 8.00    |

| Luminaire Schedule (FOR REFERENCE ONLY - EXISTING UNCHANGED)  |     |       |   |             |       |            |             |  |
|---|-----|-------|---|-------------|-------|------------|-------------|--|
| Project: RIVA MOTOR SPORTS  POMPANO BEACH, FL  SITE  REV 1  12-16-2012  |     |       |   |             |       |            |             |  |
| Symbol  | Qty | Label | Description   | Lumens/Lamp | LLF   | Lum. Watts | Total Watts |  |
|   | 5   | SA    | BETA BAA-S22-V-T4-400PSMH WALL      WALL MOUNT: 20' - 0' AFG  | 44000       | 0.850 | 450        | 2250        |  |
|   | 6   | SB    | -----      POLE MOUNT: 20' - 0' AFG                           | 44000       | 0.850 | 450        | 2700        |  |
|   | 2   | SC    | BETA BAA-S22-V-T4-1000PSMH WALL      WALL MOUNT: 28' - 0' AFG | 115000      | 0.800 | 1080       | 2160        |  |
|   | 3   | SD    | BETA BAA-S22-V-T4-1000PSMH      POLE MOUNT: 20' - 0' AFG      | 115000      | 0.800 | 1080       | 3240        |  |
| <div>NOTES:</div> <div>ALL LIGHTS WITHIN 200' OF A RESIDENTIAL ZONING DISTRICT MUST BE A MAX. HEIGHT OF 20' TALL</div> <div>ANY LIGHT SOURCE OR LAMP THAT EMITS MORE THAN 900 LUMENS SHALL BE CONCEALED OR SHIELDED WITH FULL CUT-OFF STYLE FIXTURE</div> |     |       |   |             |       |            |             |  |



project name  
A PROPOSED TWO STORY WAREHOUSE FOR:  
**RIVA MOTORSPORTS**  
5100 NE 13 WAY    POMPANO BEACH, FLORIDA 33061

revision dates  
REV 1: 6-15-21  
REV 2: 8-30-21

consultant seal

  
Pete M Ebersole  
Professional Engineer  
No. 120000024  
Exp. 10/6/2021

  
ARCHITECTURE  
LANDSCAPE ARCHITECTURE  
LAND PLANNING  
INTERIOR DESIGN  
GOVERNMENTAL PROCESSING  
AA26001446  
**ARCHITECTURAL ALLIANCE**  
612 S.W. 4TH AVENUE FORT LAUDERDALE, FLORIDA 33315  
TEL: (954) 764-8858 FAX: (954) 764-0731 E-MAIL: architecture@archall.net

project number  
21112

release date  
6-16-21

sheet description  
PHOTOMETRIC  
SITE  
PLAN

drawing number  
**PH-1**